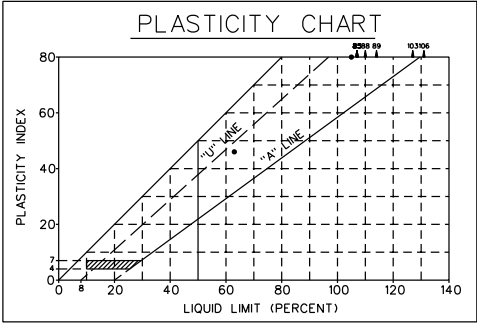
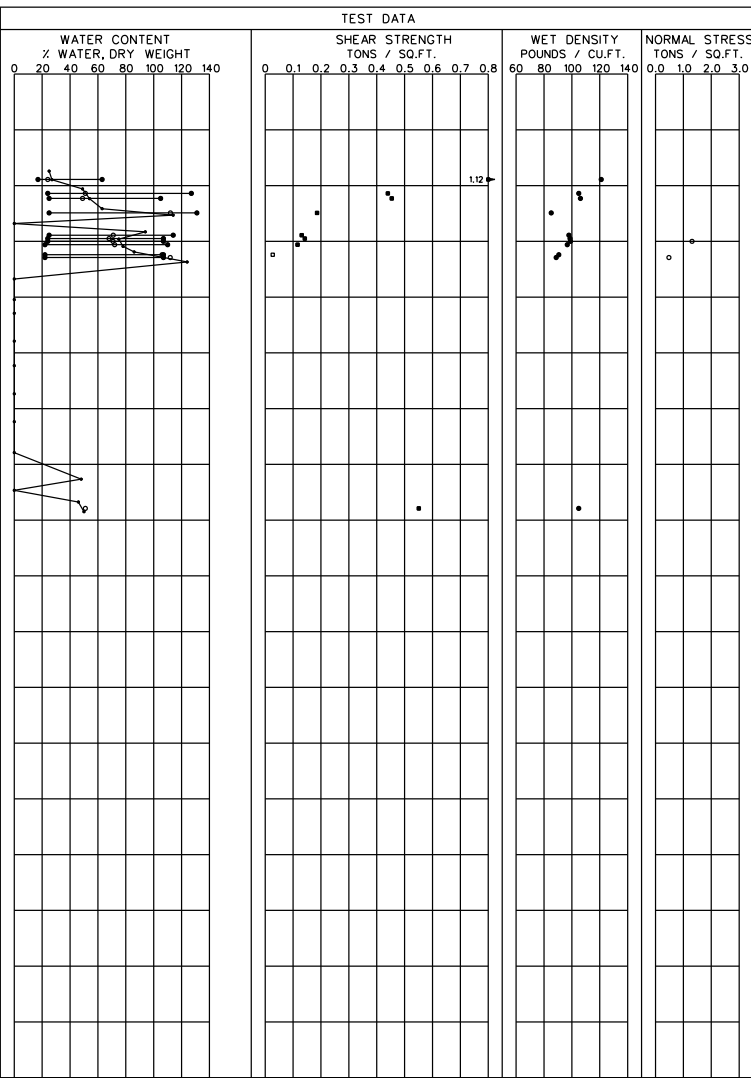
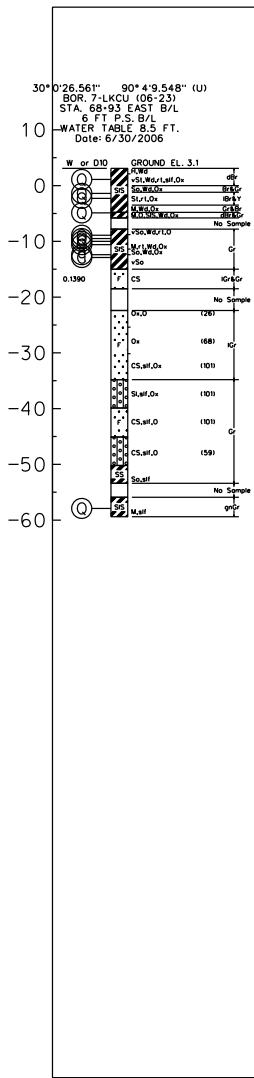
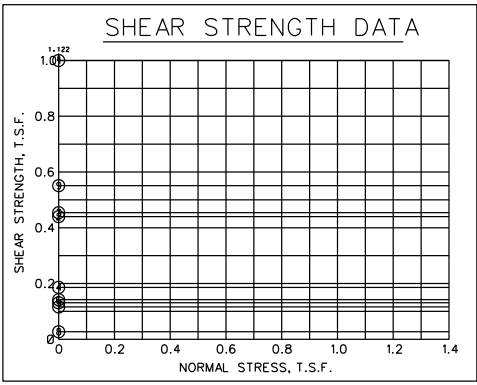


ELEVATIONS IN FEET - N.A.V.D.



TABULAR TEST DATA

ENVELOPE NO.	EL.	TYPE	STRENGTH		CLASS
			ϕ	C or Pc-TSF	
1	1.1	0	0.0	1.122	CH
2	-1.4	0	0.0	0.440	CH
3	-2.3	0	0.0	0.454	CH
4	-4.9	0	0.0	0.186	CH
5	-8.9	0	0.0	0.131	CH
6	-9.5	0	0.0	0.142	CH
7	-10.6	0	0.0	0.116	CH
8	-12.4	4	0.0	0.027	CH
9	-57.9	0	0.0	0.551	CH
10	-10.0	C	0.0	1.310	CH
11	-12.9	C	0.0	0.480	CH



- NOTES**
- - (UC) UNCONFINED COMPRESSION TEST
 - - (Q) UNCONSOLIDATED - UNDRAINED TRIAXIAL SHEAR TEST (3 POINT)
 - - (q) UNCONSOLIDATED - UNDRAINED TRIAXIAL SHEAR TEST (1 POINT)
 - ▲ - (R) CONSOLIDATED - UNDRAINED TRIAXIAL SHEAR TEST
 - ◇ - (S) CONSOLIDATED - DRAINED DIRECT SHEAR TEST
 - ω_P ω_N ω_L - ATTERBERG LIMITS
- BORING WAS TAKEN WITH A 5 INCH DIAMETER
 STEEL TUBE PISTON TYPE SAMPLER.
 FOR SOIL BORING LEGEND SEE PLATE A.
 FOR LOCATION OF BORINGS SEE PLATE
 FOR DETAILED TEST DATA SEE

US ARMY CORPS OF ENGINEERS NEW ORLEANS DISTRICT

DATE: _____ DRAWN BY: _____ CHECKED BY: _____ FILE NUMBER: _____ FILE DATE: _____

REVISIONS:

NO.	DESCRIPTION	DATE	BY

U.S. ARMY ENGINEER DISTRICT MISSISSIPPI VALLEY DIVISION

SHEET IDENTIFICATION NUMBER