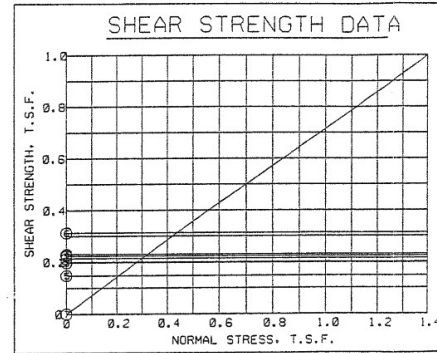
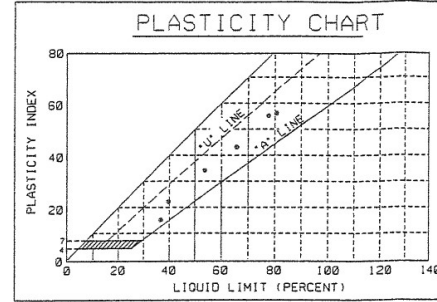
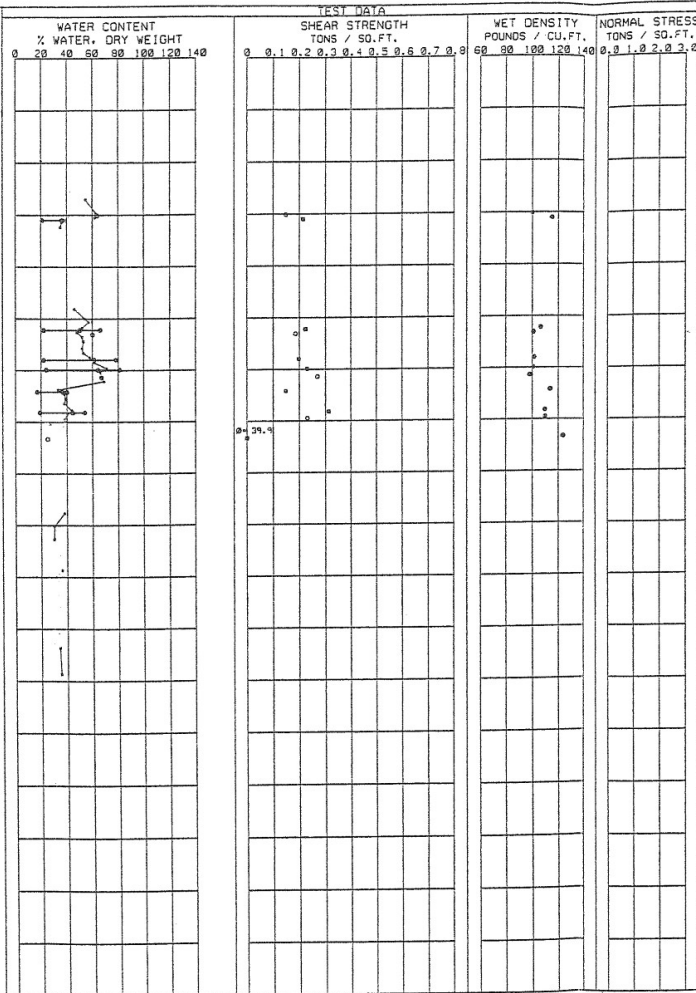
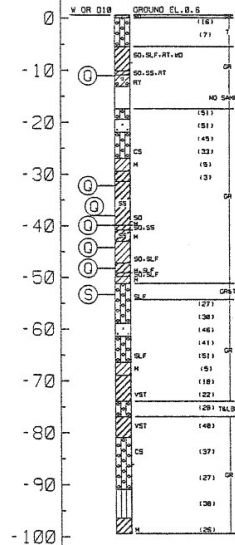


ELEVATIONS IN FEET - N.G.V.D.

STA. LA1 BOR. CU4 (98-2003)  
 7' 29.37859' LONG RD 87 23.92328'  
 CLAIBORNE AVENUE  
 08-MAY-1998




**NOTES**

- (UC) UNCONFINED COMPRESSION TEST
  - (O) UNCONSOLIDATED - UNDRAINED TRIAXIAL SHEAR TEST
  - ▲ (R) CONSOLIDATED - UNDRAINED TRIAXIAL SHEAR TEST
  - (S) CONSOLIDATED - DRAINED DIRECT SHEAR TEST
  - ω<sub>p</sub> ω<sub>n</sub> ω<sub>L</sub> ATTERBERG LIMITS
- BORING WAS TAKEN WITH A 5 INCH DIAMETER STEEL TUBE PISTON TYPE SAMPLER.  
 FOR SOIL BORING LEGEND SEE PLATE A.  
 FOR LOCATION OF BORINGS SEE PLATE  
 FOR DETAILED TEST DATA SEE

**TABULAR TEST DATA**

ENVELOPE NO.	EL.	TYPE	STRENGTH		CLASS
			φ	c - TSP	
1	-11.8	O	0.0	0.214	SC
2	-32.2	O	0.0	0.224	CH
3	-39.0	O	0.0	0.158	CH
4	-39.9	O	0.0	0.238	CH
5	-44.2	O	0.0	0.148	CL
6	-46.2	O	0.0	0.313	CH
7	-53.3	S	31.9	0.000	SM

SOUTHEAST LOUISIANA URBAN FLOOD CONTROL PROJECT  
 ORLEANS PARISH SECTION 533(D) REPORT  
 UPTOWN SUBBASIN  
 ORLEANS PARISH, LOUISIANA  
 UNDISTURBED BORING  
 BORING CU4



S. ARMY ENGINEER DISTRICT, NEW ORLEANS  
 CORPS OF ENGINEERS  
 NEW ORLEANS, LOUISIANA

DESIGNED BY: VOJAKOVICH  
 DRAWN BY: WOODS  
 CHECKED BY: VOJAKOVICH

PLOT SCALE: PLOT DATE: (ADD FILE#&D)53.DOC  
 20:1 21 MAY 02 FILE NO.  
 DATE: JUNE 2002 H-4-45111