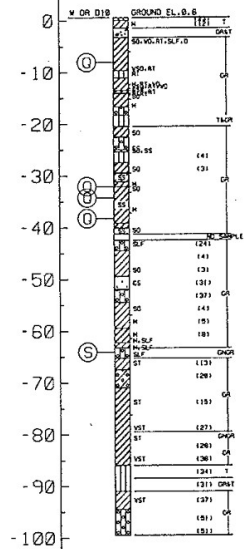
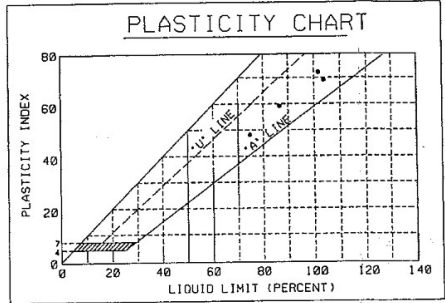


ELEVATIONS IN FEET - N.G.V.D.

STA. LA 0
 BOR. NO. 7 (98-0883)
 S6 12.68555 LONG 98 06 11.38954
 NAPOLEON AVENUE
 23-MAR-1978

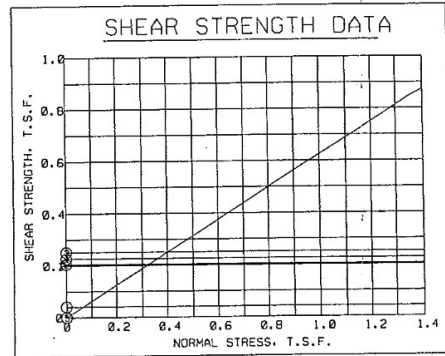


WATER CONTENT % WATER, DRY WEIGHT	TEST DATA SHEAR STRENGTH TONS / SQ. FT.		WET DENSITY POUNDS / CU. FT.	NORMAL STRESS TONS / SQ. FT.
	0 20 40 60 80 100 120 140	0 0.1 0.2 0.3 0.4 0.5 0.6 0.7 0.8		
~10	~0.2	~0.1	~100	~0.1
~15	~0.3	~0.1	~100	~0.1
~20	~0.4	~0.1	~100	~0.1
~25	~0.5	~0.1	~100	~0.1
~30	~0.6	~0.1	~100	~0.1
~35	~0.7	~0.1	~100	~0.1
~40	~0.8	~0.1	~100	~0.1
~45	~0.9	~0.1	~100	~0.1
~50	~1.0	~0.1	~100	~0.1
~55	~1.1	~0.1	~100	~0.1
~60	~1.2	~0.1	~100	~0.1
~65	~1.3	~0.1	~100	~0.1
~70	~1.4	~0.1	~100	~0.1
~75	~1.5	~0.1	~100	~0.1
~80	~1.6	~0.1	~100	~0.1
~85	~1.7	~0.1	~100	~0.1
~90	~1.8	~0.1	~100	~0.1
~95	~1.9	~0.1	~100	~0.1
~100	~2.0	~0.1	~100	~0.1



TABULAR TEST DATA

ENVELOPE NO.	EL.	TYPE	STRENGTH		CLASS
			ϕ	c - 15%	
1	-8.0	0	0.0	0.041	CH
2	-32.0	0	0.0	0.285	CH
3	-34.2	0	0.0	0.251	CH
4	-38.2	0	0.0	0.226	CH
5	-64.0	S	32.0	0.000	SH



NOTES

- - (UC) UNCONFINED COMPRESSION TEST
 - - (O) UNCONSOLIDATED - UNDRAINED TRIAXIAL SHEAR TEST
 - ▲ - (R) CONSOLIDATED - UNDRAINED TRIAXIAL SHEAR TEST
 - - (S) CONSOLIDATED - DRAINED DIRECT SHEAR TEST
 - w_p w_L w_U - ATTERBERG LIMITS
- BORING WAS TAKEN WITH A 5 INCH DIAMETER STEEL TUBE PISTON TYPE SAMPLER. FOR SOIL BORING LEGEND SEE PLATE A. FOR LOCATION OF BORINGS SEE PLATE FOR DETAILED TEST DATA SEE

SOUTHEAST LOUISIANA URBAN FLOOD CONTROL PROJECT
 ORLEANS PARISH SECTION 53(10) REPORT
 UPTOWN SUBBASIN
 ORLEANS PARISH, LOUISIANA
 UNDISTURBED BORING
 BORING NU7

U.S. ARMY ENGINEER DISTRICT, NEW ORLEANS
 CORPS OF ENGINEERS
 NEW ORLEANS, LOUISIANA

DESIGNED BY YORADVICH | PLOT SCALE | PLOT DATE | CADD FILE: 020153.DGN
 DRAWN BY: WOODS | 2011 | 22 MAY 02 | FILE NO.
 CHECKED BY: YORADVICH | DATE: JUNE 2002 | H-4-45111