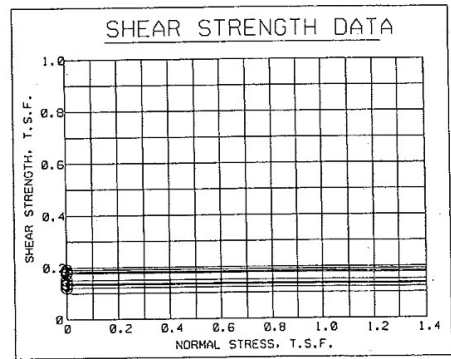
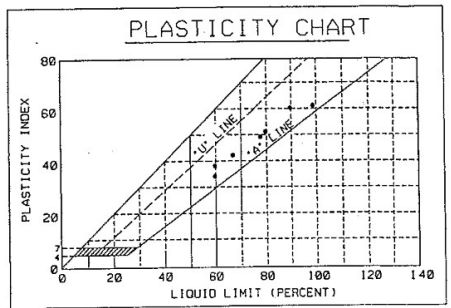


TABULAR TEST DATA

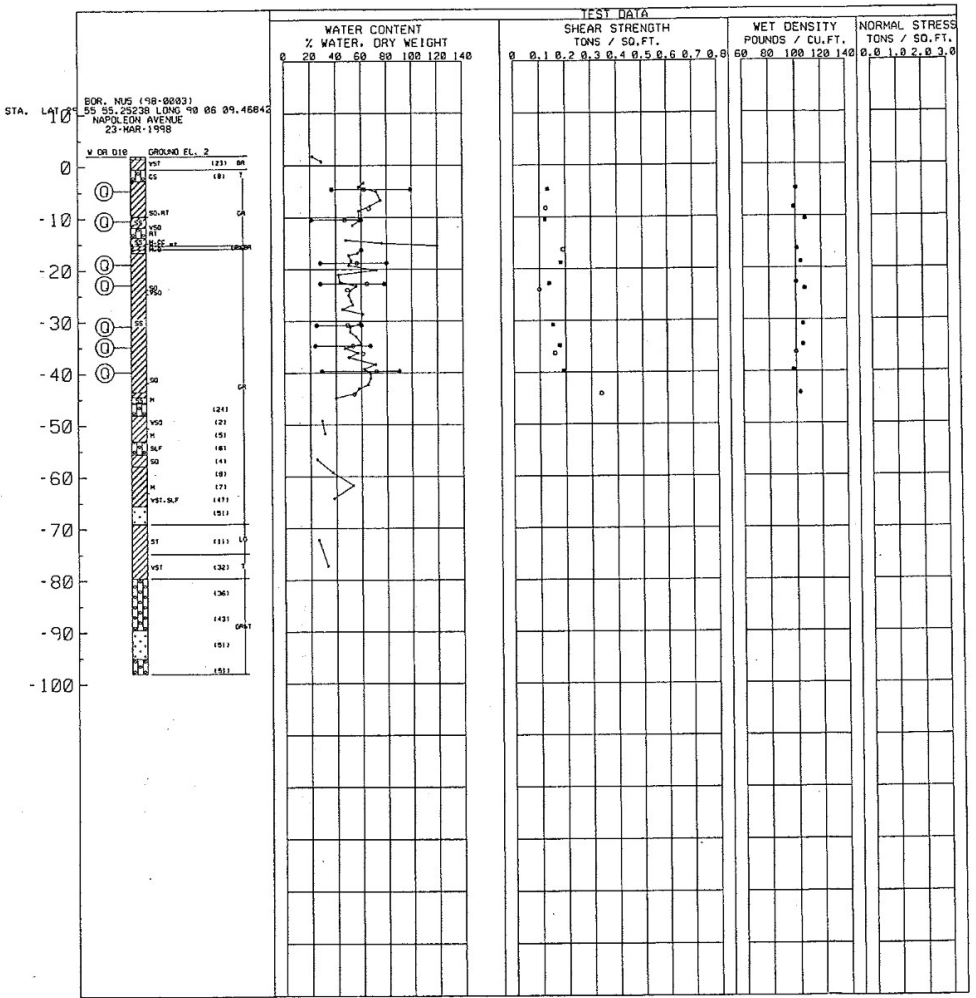
NO.	ENVELOPE	EL.	TYPE	STRENGTH		CLASS
				ϕ	c - T.S.F.	
1	-4.6	0	0.0	0.133	CH	
2	-10.0	0	0.0	0.122	CH	
3	-18.0	0	0.0	0.183	CH	
4	-22.0	0	0.0	0.138	CH	
5	-28.8	0	0.0	0.191	CH	
6	-34.8	0	0.0	0.177	CH	
7	-39.7	0	0.0	0.191	CH	



NOTES

- - (UC) UNCONFINED COMPRESSION TEST
- - (U) UNCONSOLIDATED - UNRAINED TRIAXIAL SHEAR TEST
- ▲ - (R) CONSOLIDATED - UNRAINED TRIAXIAL SHEAR TEST
- - (S) CONSOLIDATED - DRAINED DIRECT SHEAR TEST
- _W - ○_L ATTERBERG LIMITS

BORING WAS TAKEN WITH A 5 INCH DIAMETER
STEEL TUBE PISTON TYPE SAMPLER.
FOR SOIL BORING LEGEND SEE PLATE A.
FOR LOCATION OF BORINGS SEE PLATE
FOR DETAILED TEST DATA SEE



SOUTHEAST LOUISIANA URBAN FLOOD CONTROL PROJECT
ORLEANS PARISH SECTION 533(D) REPORT
UPTOWN SUBBASIN
ORLEANS PARISH, LOUISIANA
UNDISTURBED BORING
BORING NUS

U.S. ARMY ENGINEER DISTRICT, NEW ORLEANS
CORPS OF ENGINEERS
NEW ORLEANS, LOUISIANA

DESIGNED BY: W.KOVICH PLOT SCALE: PLOT DATE: 2011 20 MAY 02 FILE NO. H-4-45111
DRAWN BY: WOODS CHECKED BY: W.KOVICH DATE: JUNE 2002