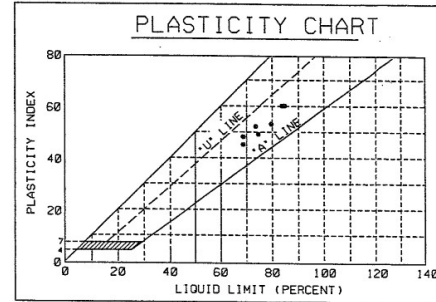
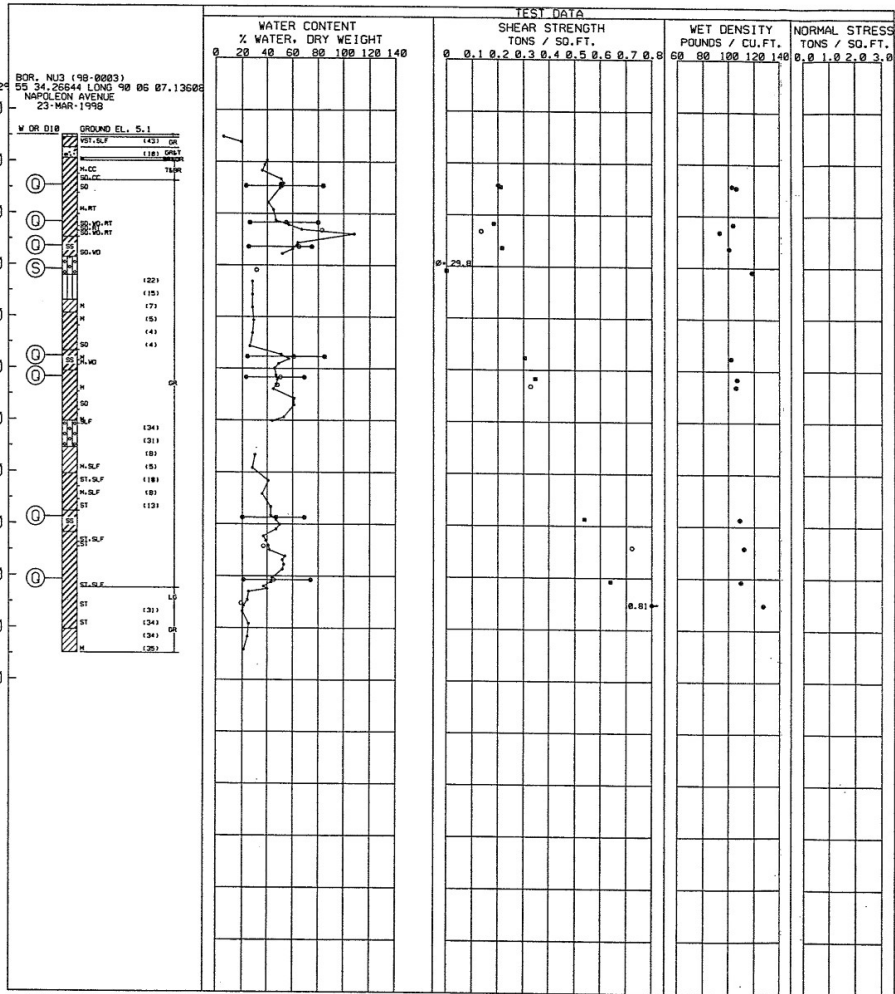


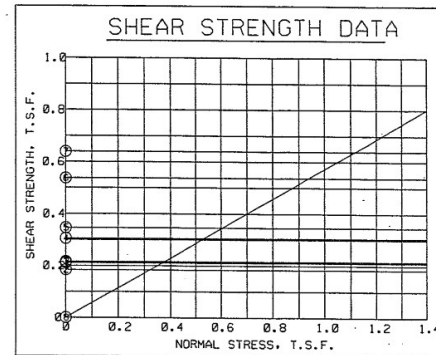
BOR. NUJ (98-0003)
 55 34.26644 LONG 90 05 07.13686
 NAPOL EOW AVENUE
 23-MAR-1998

ELEVATIONS IN FEET - N.G.V.D.



TABULAR TEST DATA

ENVELOPE NO.	EL.	TYPE	STRENGTH		CLASS
			ϕ	c - TSF	
1	-4.6	O	0.0	0.211	CH
2	-11.7	O	0.0	0.184	CH
3	-15.4	O	0.0	0.216	CH
4	-37.7	O	0.0	0.305	CH
5	-41.7	O	0.0	0.346	CH
6	-68.7	O	0.0	0.537	CH
7	-80.7	O	0.0	0.639	CH
8	-20.9	S	29.0	0.000	SH



NOTES

- O - (UC) UNCONFINED COMPRESSION TEST
 - - (D) UNCONSOLIDATED - UNDRAINED TRIAXIAL SHEAR TEST
 - ▲ - (R) CONSOLIDATED - UNDRAINED TRIAXIAL SHEAR TEST
 - - (S) CONSOLIDATED - DRAINED DIRECT SHEAR TEST
 - — ○_p — ○_N — ○_L — ATTERBERG LIMITS
- BORING WAS TAKEN WITH A 5 INCH DIAMETER STEEL TUBE PISTON TYPE SAMPLER.
 FOR SOIL BORING LEGEND SEE PLATE A.
 FOR LOCATION OF BORINGS SEE PLATE
 FOR DETAILED TEST DATA SEE

SOUTHEAST LOUISIANA URBAN FLOOD CONTROL PROJECT
 ORLEANS PARISH SECTION 53(D) REPORT
 UPTOWN SUBBASIN
 ORLEANS PARISH, LOUISIANA
 UNDISTURBED BORING
 BORING NUJ

U.S. ARMY ENGINEER DISTRICT, NEW ORLEANS
 CORPS OF ENGINEERS
 NEW ORLEANS, LOUISIANA

DESIGNED BY: VOKOVICH PLOT SCALE: PLOT DATE: (ADD FILE#28) 45, 00N
 DRAWN BY: WOODS 20 11 20 MAY 82 FILE NO.
 CHECKED BY: VOKOVICH DATE: JUNE 2002 H-4-45111