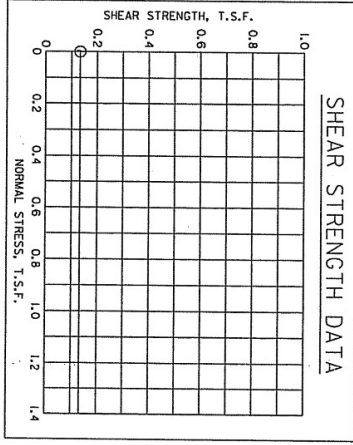
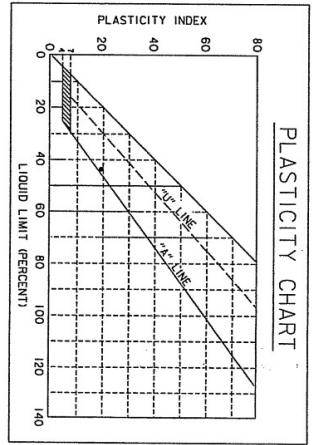
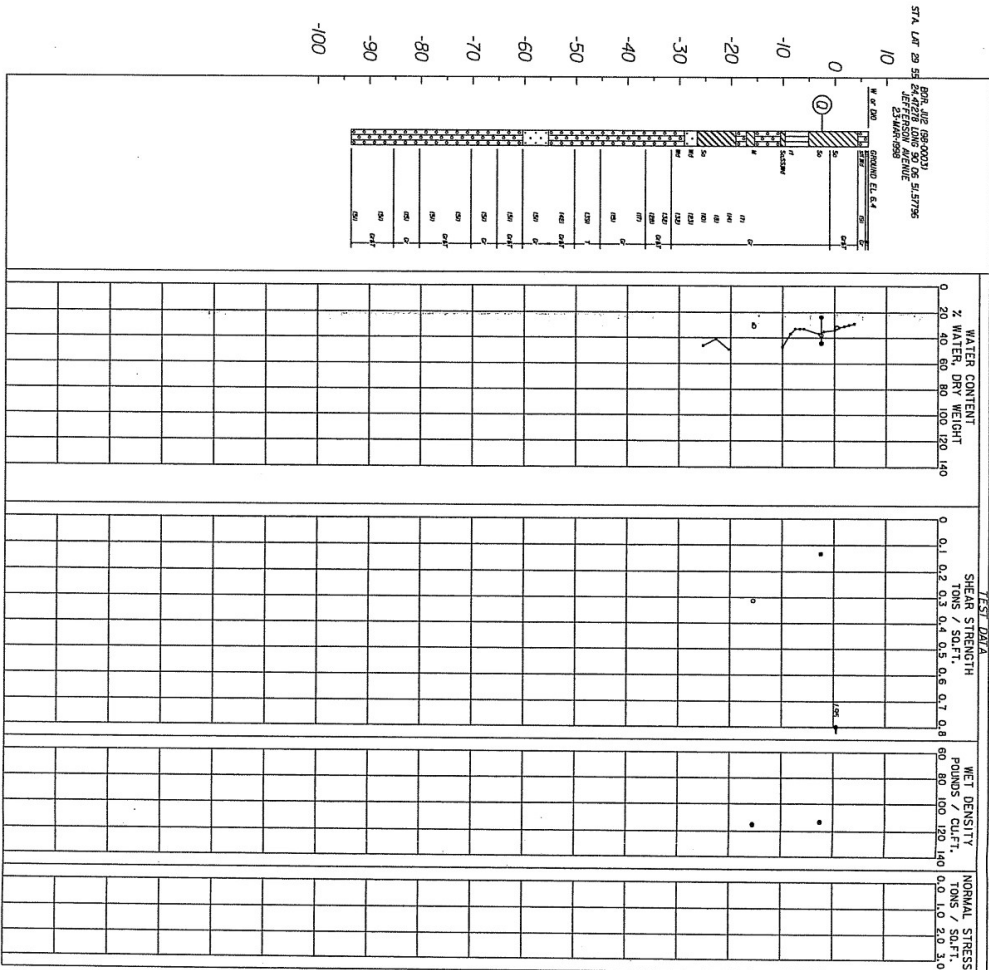


ELEVATIONS IN FEET - M.G.V.D.



NOTES

- - UCU UNCONFINED COMPRESSION TEST
- - UO UNCONSOLIDATED - UNDRAINED TRIAXIAL SHEAR TEST
- ▲ - UC CONSOLIDATED - UNDRAINED TRIAXIAL SHEAR TEST
- - IS CONSOLIDATED - DRAINED DIRECT SHEAR TEST
- - ATTERBERG LIMITS

BORING WAS TAKEN WITH A 5 INCH DIAMETER STEEL TUBE PISTON TYPE SAMPLER. FOR SOIL BORING LEGEND SEE PLATE "A". FOR LOCATION OF BORINGS SEE PLATE "B". FOR DETAILED TEST DATA SEE

TABULAR TEST DATA

ENVELOPE NO.	TYPE	STRENGTH CLASS
1	0	0.05
2	0	0.05
3	0	0.05
4	0	0.05
5	0	0.05
6	0	0.05
7	0	0.05
8	0	0.05
9	0	0.05
10	0	0.05
11	0	0.05
12	0	0.05
13	0	0.05
14	0	0.05
15	0	0.05
16	0	0.05
17	0	0.05
18	0	0.05
19	0	0.05
20	0	0.05
21	0	0.05
22	0	0.05
23	0	0.05
24	0	0.05
25	0	0.05
26	0	0.05
27	0	0.05
28	0	0.05
29	0	0.05
30	0	0.05
31	0	0.05
32	0	0.05
33	0	0.05
34	0	0.05
35	0	0.05
36	0	0.05
37	0	0.05
38	0	0.05
39	0	0.05
40	0	0.05
41	0	0.05
42	0	0.05
43	0	0.05
44	0	0.05
45	0	0.05
46	0	0.05
47	0	0.05
48	0	0.05
49	0	0.05
50	0	0.05

SOUTHEAST LOUISIANA URBAN FLOOD CONTROL PROJECT  
ORLEANS PARISH SECTION 33301 REPORT  
UP TOWN SUBBASIN  
ORLEANS PARISH, LOUISIANA  
UNDISTURBED BORING  
BORING JU2

U.S. ARMY ENGINEER DISTRICT, NEW ORLEANS  
CORPS OF ENGINEERS  
NEW ORLEANS, LOUISIANA

DESIGNED BY VOLVOCH  
CHECKED BY VOLVOCH  
DATE: JUNE 2002

100 FIELD ST. NEW ORLEANS, LA 70112  
21 MAY 02  
H-4-45111

PLATE C-68